

NEW!

MONT-BLANC

HIP & RIDGE SHINGLES



E-Z FOLD SHINGLE
for quick and easy
layered application



**NO KNIFE
REQUIRED:**
pre-scored shingles
with easy-to-tear tabs



**CHOOSE FROM
1-, 2- OR 3-LAYER**
application for a look
as unique as you are.



**AVAILABLE IN
12 COLOURS**
to match our popular
laminated shingles

They say you can't please everyone, but we beg to differ. Our new **MONT-BLANC hip & ridge shingles** will delight homeowners with their colour palette designed to match our existing laminated shingles and their choice of 1-, 2-, or 3-layer application. Roofing professionals will be just as thrilled with **MONT-BLANC's pre-scored E-Z FOLD design** allowing for a no-knife quick and flawless installation.



BUILDING PRODUCTS OF CANADA CORP.

SINCE 1905

bpcan.com



MONT-BLANC

HIP & RIDGE SHINGLES

COLOURS



WEATHERED ROCK



TWILIGHT GREY



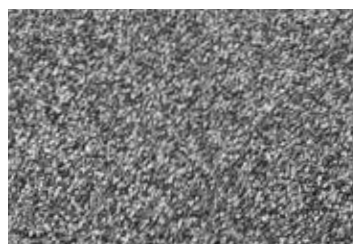
SUNSET CEDAR



COBALT BLACK



AUTUMN BROWN



SLATE GREY



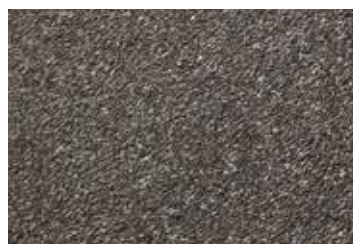
RUSTIC CEDAR



CLASSIC BROWN



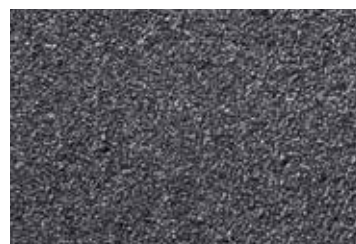
BARKWOOD



ANTIQUÉ SLATE



2-TONE BROWN



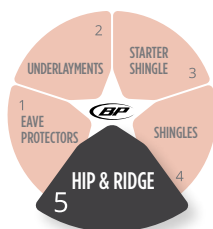
2-TONE BLACK

NOTE: Due to limitations of the printing process, actual shingle colours and granule blends could be different from those pictured. It is recommended that you view a full size shingle before making a final colour selection. We reserve the right to change colours at any time.

SPECIFICATIONS

DIMENSIONS (APPROX.)	EXPOSURE	SHINGLES / BUNDLE	COVERAGE / BUNDLE	SPECIFICATION COMPLIANCE	WARRANTY PERIOD (YEARS)	WIND PROTECTION*
1 000 mm x 336 mm (39 3/8" x 13 1/4")	143 mm (5 5/8")	21	1-layer application: 29.6 lin. ft. (9 lin. m.) 2-layer application: 14.8 lin. ft. (4.5 lin. m.) 3-layer application: 9.8 lin. ft. (3 lin. m.)	CSA A123.5 ASTM D3462 ASTM D3161, Class A, D and F Meets Class A requirements for roof coverings fire test in accordance with ASTM E108, UL790 and CAN/ULC S107	Same as shingles installed	

* Please refer to detailed warranty documents and application instructions for complete information.



Get a **WEATHER-TITE® ROOFING SYSTEM** and get an **ENHANCED LIFETIME WARRANTY*** for FREE:

- 100% Labour and Material Coverage **20 Years**
- High Wind Warranty up to **220 km/h**
- 100% Free Transfer **20 Years**
- Available at **No Extra Cost**

* Conditions apply. See bpcan.com/warranties for details.

bpcan.com