



BUILDING PRODUCTS OF CANADA CORP.

FOR OVER 100 YEARS

BP INSUL-SHEATHING Panel

R-5 XP



APPLICATION INSTRUCTIONS

R-5 XP BP Insul-Sheathing is a 30 mm (1 3/16") asphalt-coated thermal insulating and air-barrier panel. It combines the thermal and wind-bracing properties of fiberboard with the thermal and air-blocking capabilities of extruded polystyrene that provides R-5 of continuous insulation for thermal bridge coverage as well as an integrated exterior air-barrier.

R-5 XP BP Insul-Sheathing can be installed with either the fiberboard or the polystyrene facing outside. However, to benefit from the integrated air-barrier, the board must be installed with the extruded polystyrene (blue side) facing the exterior.

FIELD STORAGE AND HANDLING

It is important to keep sheathing off the ground and to cover it when storing outside.

Panels with broken edges or punctures should not be installed. Use them in areas where they can be cut to eliminate the puncture or broken edge.

Products should be stored under conditions appropriate to their use, and the exterior finish should be applied as soon as possible to protect the fiberboard when installed with polystyrene (blue side) facing the interior.

If applied sheathing should get wet, wait until it is completely dry before application of the exterior finish.

INSTALLATION

Apply **R-5 XP** BP Insul-Sheathing on the outside of wood or steel framing. Start installing sheathing vertically at a corner or at the end of the wall band on studs erected at 305 mm, 406 mm or 610 mm (12", 16", or 24") centers as specified. If fiberboard is facing outward, complete by applying an Air-Lock water-resistive membrane.

Integrated Air-Barrier

To benefit from **R-5 XP**'s integrated air-barrier, the panel must be installed with the polystyrene (blue side) facing outward. Apply sheathing tape to a clean panel and apply pressure to ensure proper adhesion over every joint. Make sure it overlaps the joint by at least 25 mm (1 in.) on either side, and by at least 50.8 mm (2 in.) for internal or external corner joints. Do not install sealing tapes on **R-5 XP** panels when raining or when the surface is damp. BP recommends the use of either Dow WEATHERMATE™ Construction Tape, 3M 8088 Red Construction Sheathing Tape, or equivalent for use with **R-5 XP** Insul-Sheathing.

«Apply sheathing tape to a clean panel and apply pressure to ensure proper adhesion over every joint.»



FLASHING

Flashing over head casings, under, over and around windows and doors, and at the junction of walls and foundation must comply with National and local building codes as to type, size, coverage and installation requirements.

FASTENING

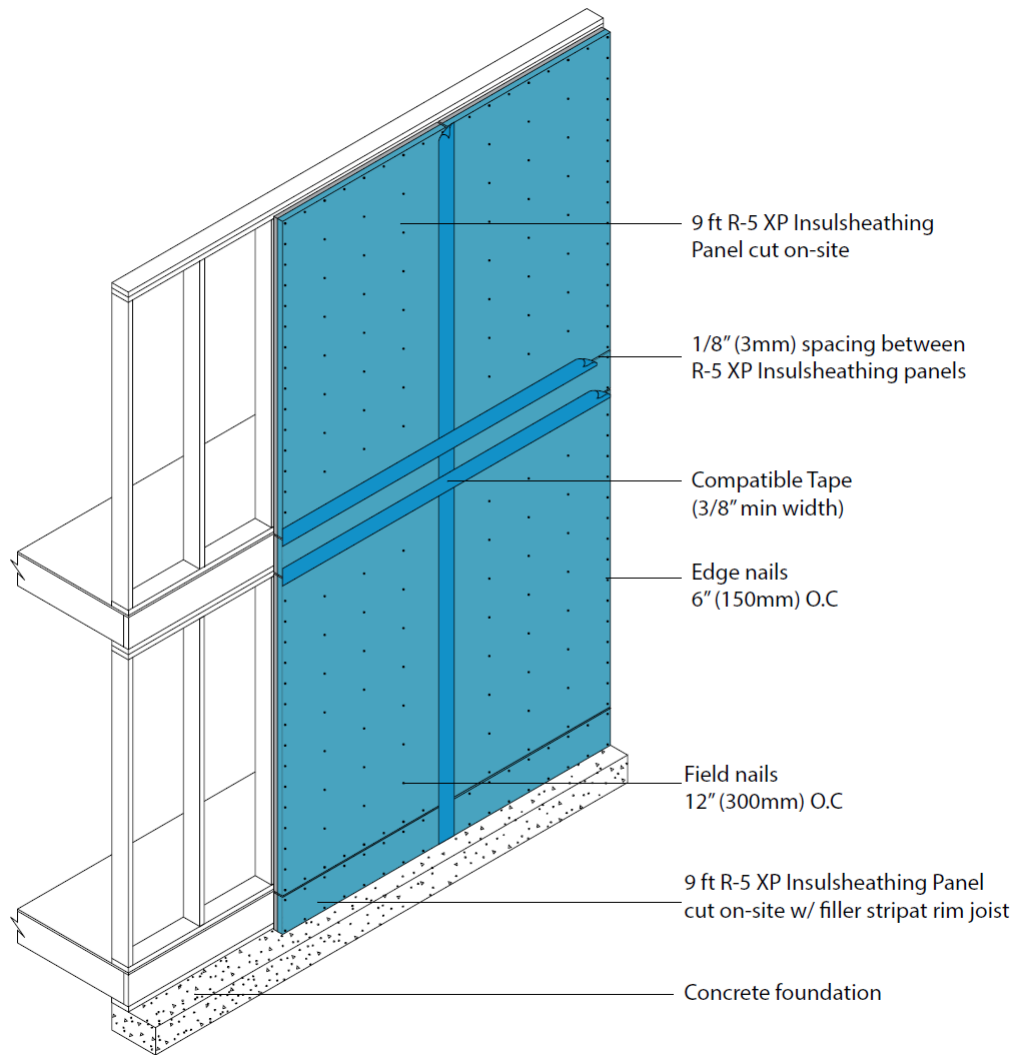
Fasten panels to framing using a 63 mm (2 1/2") min. hot-dipped galvanized roofing nail, with a 11.1 mm (7/16") head and 3.2 mm (0.126") shank min. For best results, use cap head nails or screws as an alternative. **The use of cap nails is strongly recommended** when the extruded polystyrene is installed outward to act as an air barrier.

Do not drive nail head through the panel surface. Start fastening R-5 XP first to the intermediate studs, spacing fasteners 300 mm (12") apart, then, along edges and at window and door openings every 150 mm (6"). Penetration in the frame member should be of at least 32 mm (1 1/4").

Fasteners should not be less than 9.5 mm (3/8") from panel edges, or

Use staples with a 25.4 mm (1») crown, 1.6 mm (1/16») min. in leg diameter, and a leg length of 57 mm (2 1/4") min. Staples must be spaced 150 mm (6») at perimeter and 300 mm (12») in the field, with crowns parallel to the studs to ensure that both legs penetrate the wood frame.

«The use of cap nails is strongly recommended when the extruded polystyrene is installed outward to act as an air barrier.»



FINISHING

Do not use **R-5 XP** BP Insul-Sheathing for the attachment of cladding materials. Vertical furring strips should be added as a nailing base.

Note that when furring is applied, the resulting air space between sheathing and cladding may require the installation of proper fire stops in accordance with the Building Code.

All exterior finishes or cladding materials should be installed according to the manufacturer's instructions. Refer to the National Building Code for cladding fasteners requirements.

REFERENCES

- National Building Code (NBC 2015) and OBC 2012, Div. B, Article 9.23.3.5 Fasteners for Sheathing or Subflooring and Table 9.23.3.5-A
- National Building Code (NBC 2015) and OBC 2012, Div. B, Article 9.27.5 Attachment of Cladding
- National Building Code (NBC 2015) and OBC 2012, Div. B, Article 9.10.16.2 Required Fire Blocks in Wall Assemblies
- National Building Code (NBC 2015), Div. B, Article 9.23.13 Bracing to Resist Lateral Loads Due to Wind and Earthquake and OBC 2012, Div. B, Article 9.23.10.2 Bracing and lateral Support